

## MACQUARIE 22

DESIGNED TO SUIT: **14.00m x 25.00m**

REAR SETBACK: 3.00m

MINIMUM LOT WIDTH: **14.0m**

HOUSE EXTERIOR LENGTH

**18.07m**

HOUSE EXTERIOR WIDTH

**12.80m**

HOUSE AREA TOTAL

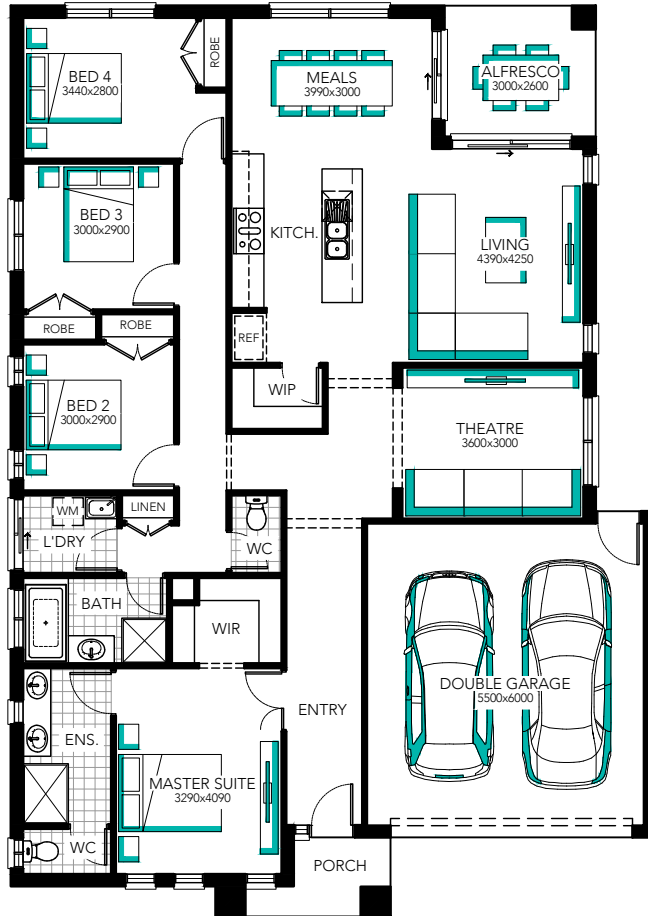
**208.55m<sup>2</sup>**

HOUSE TOTAL SQUARES

**22.45**



Minimum lot sizes & dimensions may vary subject to fall of land, easement details, council & developer requirements. House size and dimensions on brochure based on Cashmere facade. Sizes and dimensions may vary subject to facade selection. Refer to working drawings for complete dimensions.



## MACQUARIE 22

DESIGNED TO SUIT: **14.00<sub>m</sub> X 25.00<sub>m</sub>**

REAR SETBACK: 3.00m

MINIMUM LOT WIDTH: **14.0<sub>m</sub>**

HOUSE  
EXTERIOR LENGTH

**18.07<sub>m</sub>**

HOUSE  
EXTERIOR WIDTH

**12.80<sub>m</sub>**

HOUSE  
AREA TOTAL

**208.55<sub>m</sub><sup>2</sup>**

HOUSE  
TOTAL SQUARES

**22.45**



Minimum lot sizes & dimensions may vary subject to fall of land, easement details, council & developer requirements. House size and dimensions on brochure based on Cashmere facade. Sizes and dimensions may vary subject to facade selection. Refer to working drawings for complete dimensions.