

## EDGEWOOD 23

DESIGNED TO SUIT: **12.50m x 28.00m**

REAR SETBACK: 3.21m

MINIMUM LOT WIDTH: **12.5m**

HOUSE  
EXTERIOR LENGTH

**21.19m**

HOUSE  
EXTERIOR WIDTH

**11.25m**

HOUSE  
AREA TOTAL

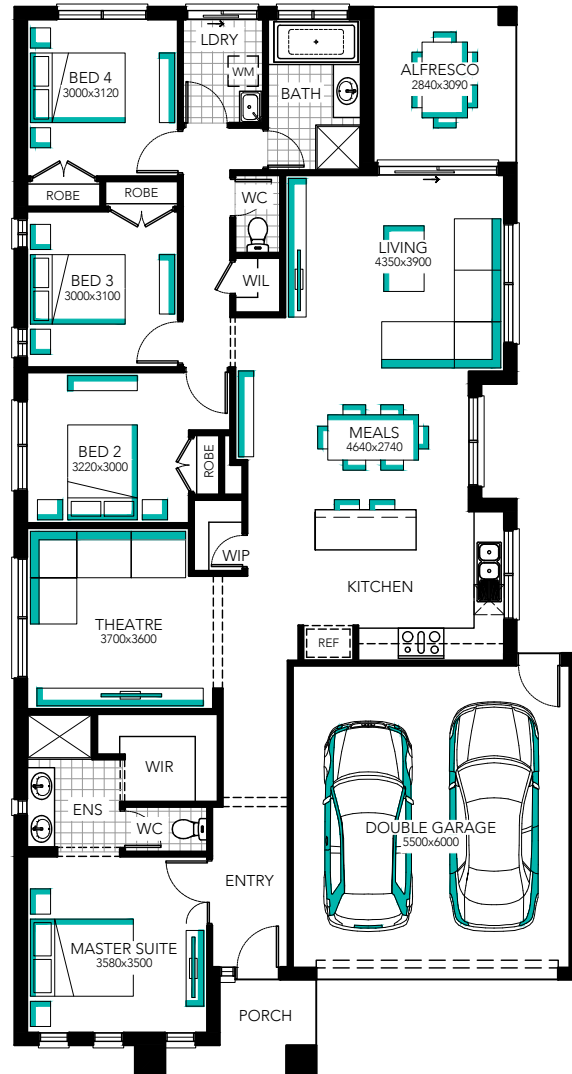
**208.67m<sup>2</sup>**

HOUSE  
TOTAL SQUARES

**22.46**



Minimum lot sizes & dimensions may vary subject to fall of land, easement details, council & developer requirements. House size and dimensions on brochure based on Cashmere facade. Sizes and dimensions may vary subject to facade selection. Refer to working drawings for complete dimensions.



## EDGEWOOD 23

DESIGNED TO SUIT: **12.50m x 28.00m**

REAR SETBACK: 3.21m

MINIMUM LOT WIDTH: **12.5m**

HOUSE  
EXTERIOR LENGTH

**21.19m**

HOUSE  
EXTERIOR WIDTH

**11.25m**

HOUSE  
AREA TOTAL

**208.67m<sup>2</sup>**

HOUSE  
TOTAL SQUARES

**22.46**



Minimum lot sizes & dimensions may vary subject to fall of land, easement details, council & developer requirements. House size and dimensions on brochure based on Cashmere facade. Sizes and dimensions may vary subject to facade selection. Refer to working drawings for complete dimensions.