

## ASHWOOD 22

DESIGNED TO SUIT: **12.50m x 30.00m**

REAR SETBACK: 3.62m

MINIMUM LOT WIDTH: **12.5m**

HOUSE  
EXTERIOR LENGTH

**22.56m**

HOUSE  
EXTERIOR WIDTH

**11.30m**

HOUSE  
AREA TOTAL

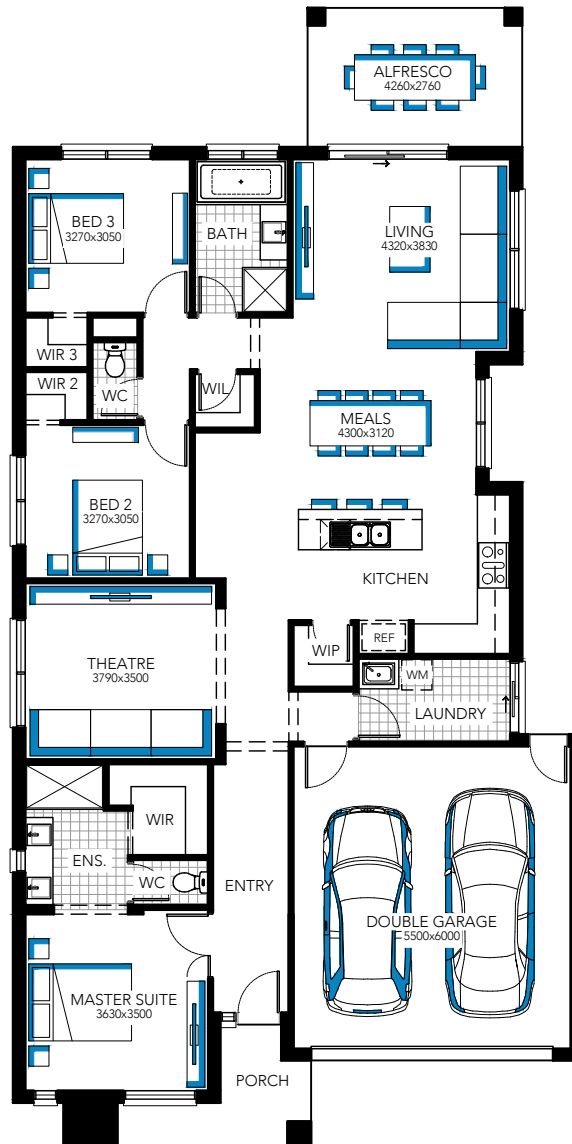
**210.05m<sup>2</sup>**

HOUSE  
TOTAL SQUARES

**22.61**



Minimum lot sizes & dimensions may vary subject to fall of land, easement details, council & developer requirements. House size and dimensions on brochure based on Lismore facade. Sizes and dimensions may vary subject to facade selection. Refer to working drawings for complete dimensions.



## ASHWOOD 22

DESIGNED TO SUIT: **12.50m x 30.00m**

REAR SETBACK: 3.62m

MINIMUM LOT WIDTH: **12.5m**

HOUSE  
EXTERIOR LENGTH

**22.56m**

HOUSE  
EXTERIOR WIDTH

**11.30m**

HOUSE  
AREA TOTAL

**210.05m<sup>2</sup>**

HOUSE  
TOTAL SQUARES

**22.61**



Minimum lot sizes & dimensions may vary subject to fall of land, easement details, council & developer requirements. House size and dimensions on brochure based on Lismore facade. Sizes and dimensions may vary subject to facade selection. Refer to working drawings for complete dimensions.